



**JUNGO driver
Installation Manual**

for

CAS Interface 2 and Dynamite

English

- 16 September 2004 -



New USB driver - JUNGODriverXXX

This new driver offers a superior compatibility with all Windows operating systems. Many problems with the previous version have been ratified and the JungoDriverXXX renders the Cas Interface 2 even more useful.

PLEASE NOTE

It is of great importance to follow these instructions on the Jungo driver very carefully in order to allow Cas Interface 2 and Dynamite to recognise the software and function correctly.

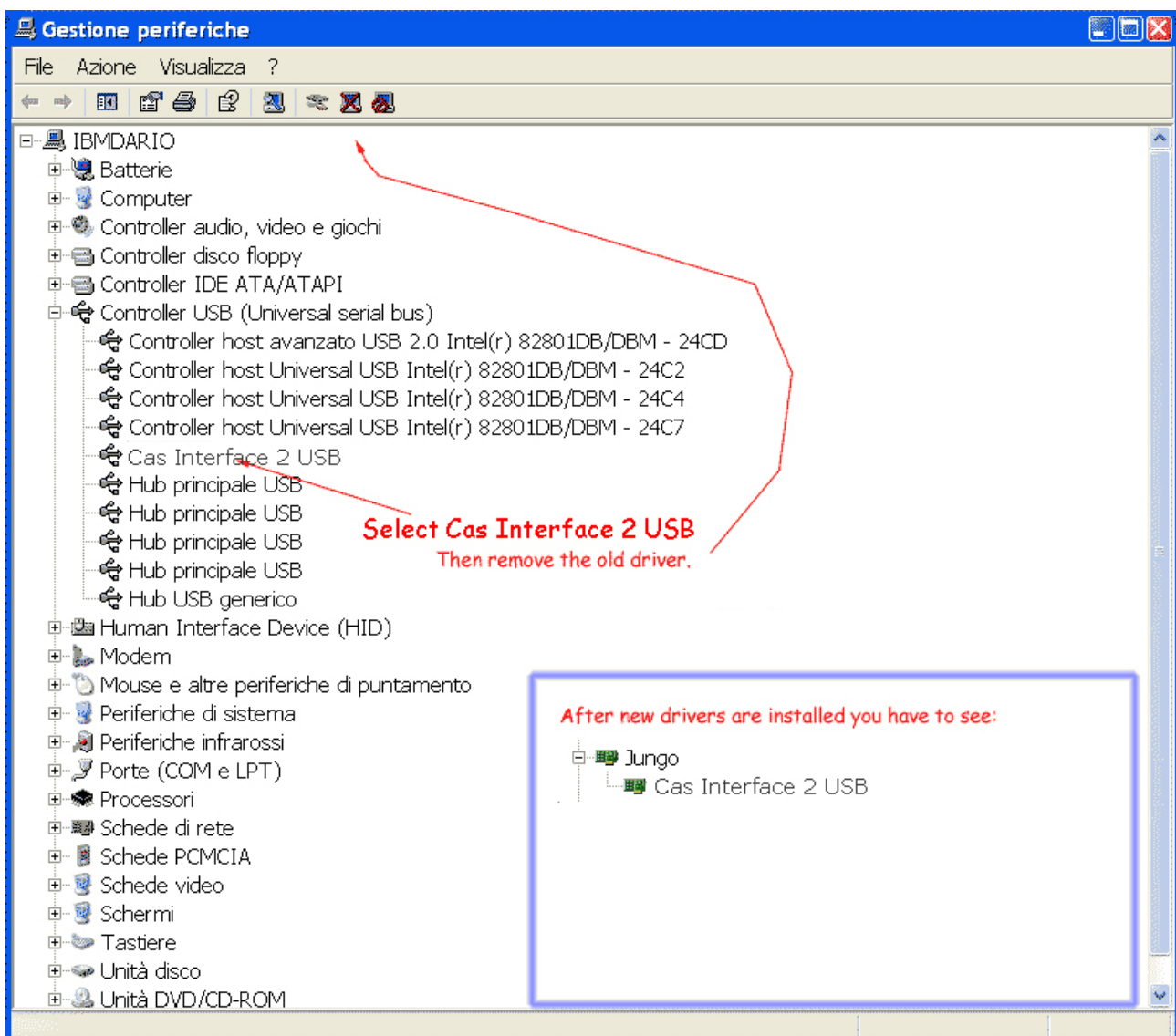
Installation instructions

***Have you installed Cas Interface Studio, previous to version 4.5?
OR Have you installed Dynamite software, previous to version 2.0?***

If you have, you will need to remove the present driver from your system relative to the device that has been installed.

Follow the steps listed below:

- Connect your Cas Interface 2 or Dynamite via the USB port without starting any software.
- Open the Windows Control Panel. In “Device Manager” (found under the “Hardware” tab in “System Properties”) remove the associated driver, as shown below (The picture refers to Cas Interface 2; if you have a Dynamite connected, you will find “Dynamite” instead of “Cas Interface 2 USB”):





Has the old driver been removed? OR Is this the first time that you have installed the driver? Follow the instructions below.

If this is the first time you have installed Cas Interface 2 or Dynamite on your computer or if the old driver has already been removed, follow this simple installation procedure.

- Download the Jungo Windriver from our website www.duolabs.com in the "Download" area.
- Disconnect the Dynamite or the Cas Interface 2 from your USB port.
Double click over the icon of the file you have just installed: after a few moments a folder should appear with the name **JungoDriverXXX** (in the place of XXX there will be some numbers indicating the driver's version) which will in turn open a black window entitled "*Jungo Driver installation....*" and indicate that the installation is in progress. At the end of the process one of two things will occur:
 - ◆ The black window will close which means the operation has been completed.
 - ◆ The statement "Operation completed." will appear. Close the window with the "X" button in the top right corner. The operation has been completed.
- At this point connect the Cas Interface 2 or Dynamite at the USB port: Depending on the operating system installed, the following will occur:
 - ◆ **Windows XP:** A new window will appear entitled "*Found New Hardware Wizard*". Select the option "*Install from a list or specific location*" and click "Next". Choose "*Include the following file in the search*" and click "Browse". The "*Browse for folders*" window will open in which you need to search for the newly-created folder **JungoDriverXXX** and click on "OK". Click "Next" and wait until the operation has been completed. At the end of the installation click "*Finish*".
 - ◆ **Windows 2000:** A new window will appear entitled "*Found New Hardware Wizard*". Click "Next", choose the option "*Search for a driver adapted to my preferences*" and click "Next", select "*Specify a folder*", click "Next" and click "Browse", a window will open entitled "*Select file*" in which you will need to select the newly-created folder **JungoDriverXXX**, click "Open", click OK, click "Next", and wait until the operation has been completed. At the end of the installation process click "Finish".
 - ◆ **Windows 98:** A new window will appear entitled "*New Hardware Wizard*". Click "Next", then select the option "*Search for the best driver for this device (recommended option)*" and click "Next". Select "*Choose a file*" and click "Browse" (if you are asked to insert a floppy disk, click "Cancel"), a window will open "*Browse for folder*" in which you should search for the newly-created folder **JungoDriverXXX** and click OK. Click "Next", the message will appear "*Search for the file for the driver for the device*" and "*CAS Interface 2 USB*" or "*Dynamite*" will



be written. Click "Next". At the end of the installation press "Finish".

- ◆ **Windows Me:** A new window will appear entitled "Found New Hardware Wizard". Choose the option "Specify the location of the driver (advanced users)" and click "Next", choose "Specify a location" and click "Browse" (if you are asked to insert a floppy disk, click "Annulla"). A window will open "Browse for folders" in which you must search for the newly-created folder **JungoDriverXXX** and click OK. Click "Next". The phrase "Search for a file for the sevice driver:" and "CAS Interface 2 USB" or "Dynamite" will be written. Click "Next" again. When the installation has been completed, click "Finish".

To verify if you have successfully installed the driver, go to the device manager (under the Hardware tab of the System Properties window which you can find in the Control Panel). Check to make sure there is the "Jungo" folder (as in the picture above) and that inside the folder there is "Cas Interface 2" or "Dynamite"; verify also that in the System Prefences folder of the system that WinDriver is present.

Only after you have completed these final steps should you launch either the Cas Interface 2 or Dynamite software.

If you have any doubts, or encounter any problems, please consult our online forum.

**Duolabs srl
Riccardo Alessi**

Duolabs Srl
Via Europa, 21
36050 Cartigliano (vi)
Italy

Tel. +39 0424 828355
Fax. +39 0424 598665

www.duolabs.com
Email: info@duolabs.com